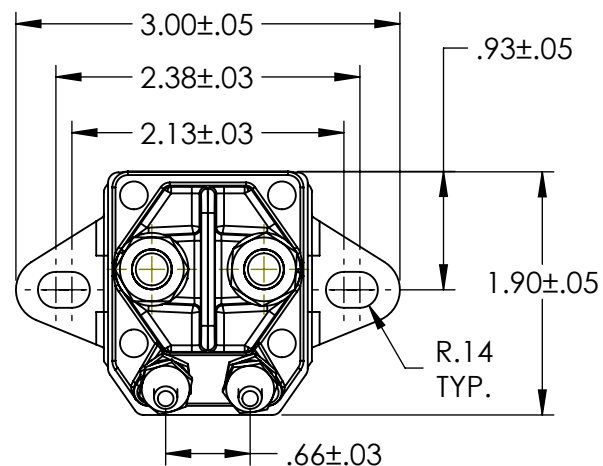
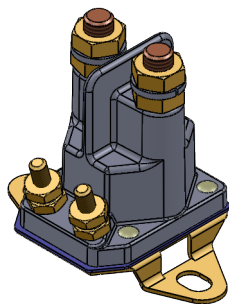
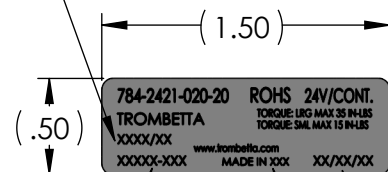


NOTES: (B)

1. DUTY CYCLE: CONTINUOUS DUTY
2. NOMINAL SYSTEM VOLTAGE: 24V
3. INRUSH CURRENT: 400A, RISE TIME ≥ 3 MILLISECONDS TO 80% OF PEAK INRUSH WITH LINEAR DECAY TO CARRY CURRENT IN ≤ 0.1 SEC
4. CARRY CURRENT: 100A
5. IP RATING: IP55
6. MIN PULL-IN VOLTAGE: 18.0V @ 25°C COIL TEMP
7. MIN HOLD VOLTAGE: 6.0V @ 25°C COIL TEMP
8. COIL RESISTANCE: 76.0 OHMS TYPICAL @ 25°C COIL TEMP
9. AMBIENT OPERATING TEMPERATURE: -40°C TO 60°C
10. LIFE CYCLE: 50K CYCLES
11. MAX CONTACT STUD TORQUE: 35 IN-LBS [3.95 Nm]
12. MAX COIL STUD TORQUE: 15 IN-LBS [1.69 Nm]
13. CONTACT MATERIAL: SILVER ALLOY
14. ROHS COMPLIANT
15. CONFLICT-FREE COMPLIANT



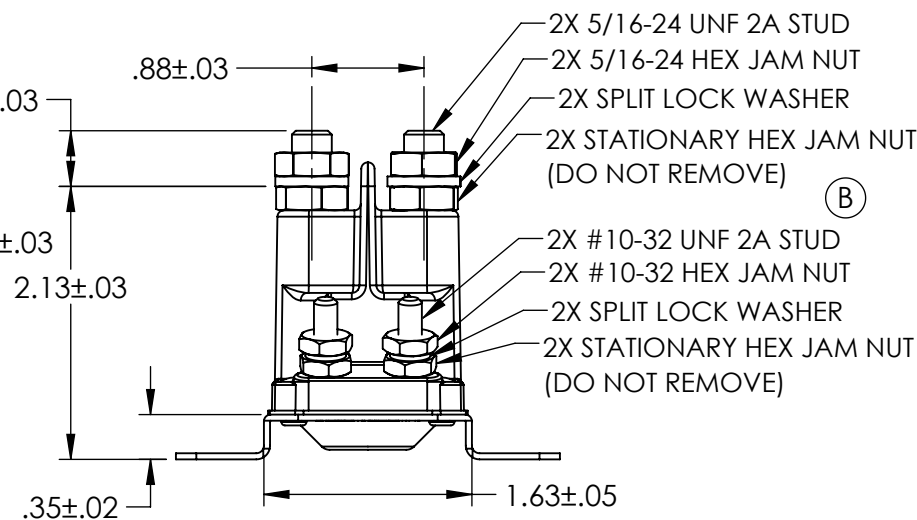
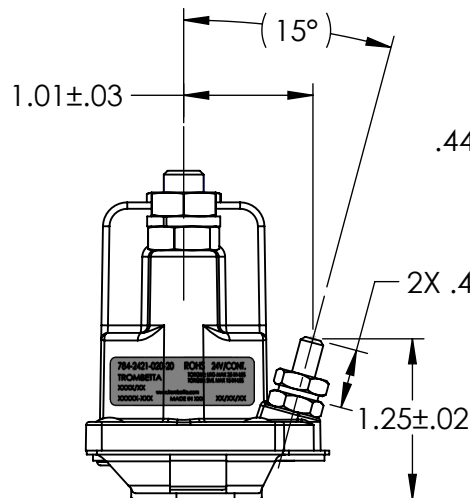
LINE LEADER
INITIALS/LINE #



JOB #

COUNTRY OF ORIGIN
(NOT REQ'D IN CHINA)

DATE CODE:
MONTH/DAY/YEAR



MATERIAL

FINISH

UNLESS OTHERWISE SPECIFIED:
BREAK ALL EDGES .005-.015 FILLETS R.010-.020
.XXX±.005 .XX±.01 ANGLES $\pm 1^\circ$ 125 FINISH

NUMBER REVISIONS ARE PROTOTYPE

CONTROL PLAN
REQUIRED

PROJECT

TROMBETTA
DC Power Solutions for a Harsh World

784-2421-020-20
DIMENSIONAL ASSEMBLY

B	ADDED PERFORMANCE SPECIFICATIONS, UPDATED ANNOTATIONS FOR HARWARE	SX	8901	04/30/20	DLW
A	RELEASED	CAW	8150	10/09/15	DLW
REV	DESCRIPTION	BY	ECN	DATE	APP

DRAWN	CAW	APP	DLW	DRAWING NUMBER	REV
DATE	10/09/18	SCALE	1:1	E10254	B